

## contact us

---



(+2) 01112258628



info@mau-eg.com



www.mau-eg.com



- Head Office -6th of October  
- New Cairo

**MAU**  
**DESIGN**  
© 2003  
ARCH.AHMED ABOUAIANA

---

Architecture  
&  
Urban Design  
Catalogue

---

LEADERS IN  
DESIGN&BUILD  
SINCE 2003





# About Us

We are a leading engineering office established in Cairo , Egypt By Architect Ahmed Abouaiana Since 2003

**Our Objectives** is to provide professional services in all aspects of Project components such as Architecture Engineering, Civil Engineering, Mechanical Engineering and Electrical Engineering.

**Our services** take into consideration the coordination between all disciplines through all stages of work.

**Including :**

- Architectural , Interior , Urban , Structural & MEP Designs.
- Technical Office Services (Workshop drawings..etc)
- Sites Supervision

**Our Engineering services** include all Designs aspects, working drawings, Interior Designs, Shop drawings and construction . We deal with the projects starting from the conceptual designs stage till handover stage.

**MAU Design:** has the ability to respond to the immediate and challenging demands of today's building designs as we apply Green Architecture technique as we deal with several simulation and environmental software.

**Our Clients**



# Our Technical Team

ARCHITECTURE  
& URBAN CATALOGUE

## Managing Director

### Design Team

- Architects
- Interior Designers
- Landscape Designers

### Technical Office Team

- Architectural Eng.
- Structural Eng.
- MEP Eng.
- Documents Controller

### Construction Team

- Architect Principle

RESIDENTIAL

HOTELS

COMMERCIAL

MEDICAL CENTERS

MIXED USE

PARKS & RESORTS

MOSQUES

FACTORIES & WAREHOUSES

URBAN & LANDSCAPE



# RESIDENTIAL







RESIDENTIAL / MIXED USE Al-Jad  
(30-storey) hotel  
Azizia-Makkah-KSA Site area : 8319 m<sup>2</sup>





Private Villas MuhayelAseer-KSA  
Site area : 2235 m2







Private villa  
Sharm Al-Shiekh-Egypt











Residential Coplex Salalah - Oman







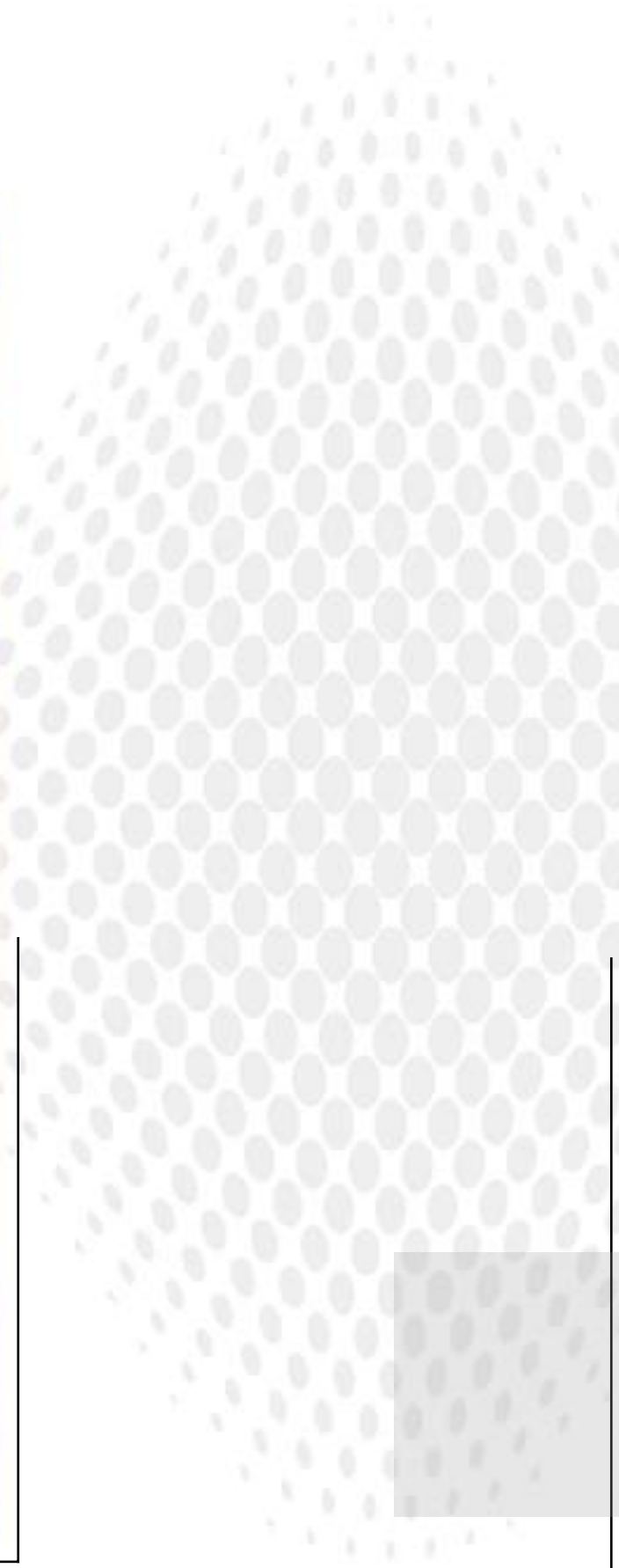








# HOTELS







(30-storey) hotel  
Azizia-Makkah-KSA Site area : 8319 m2











Hotel (5-storey ) Makkah- KSA





# COMMERCIAL BUILDINGS



AlMaimany Shopping Center  
Makkah - KSA ,Site area : 3862 m2







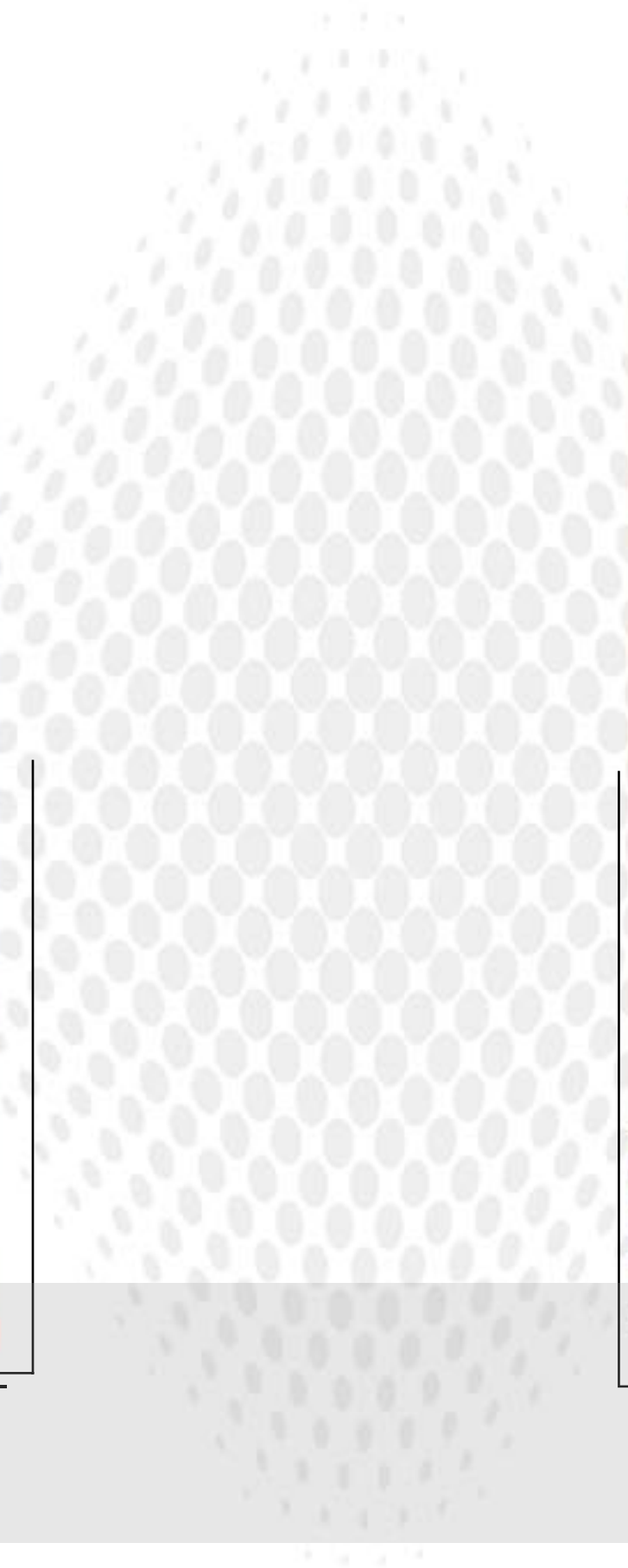


# MEDICAL





# MIXED USE





# PARKS & RESORTS



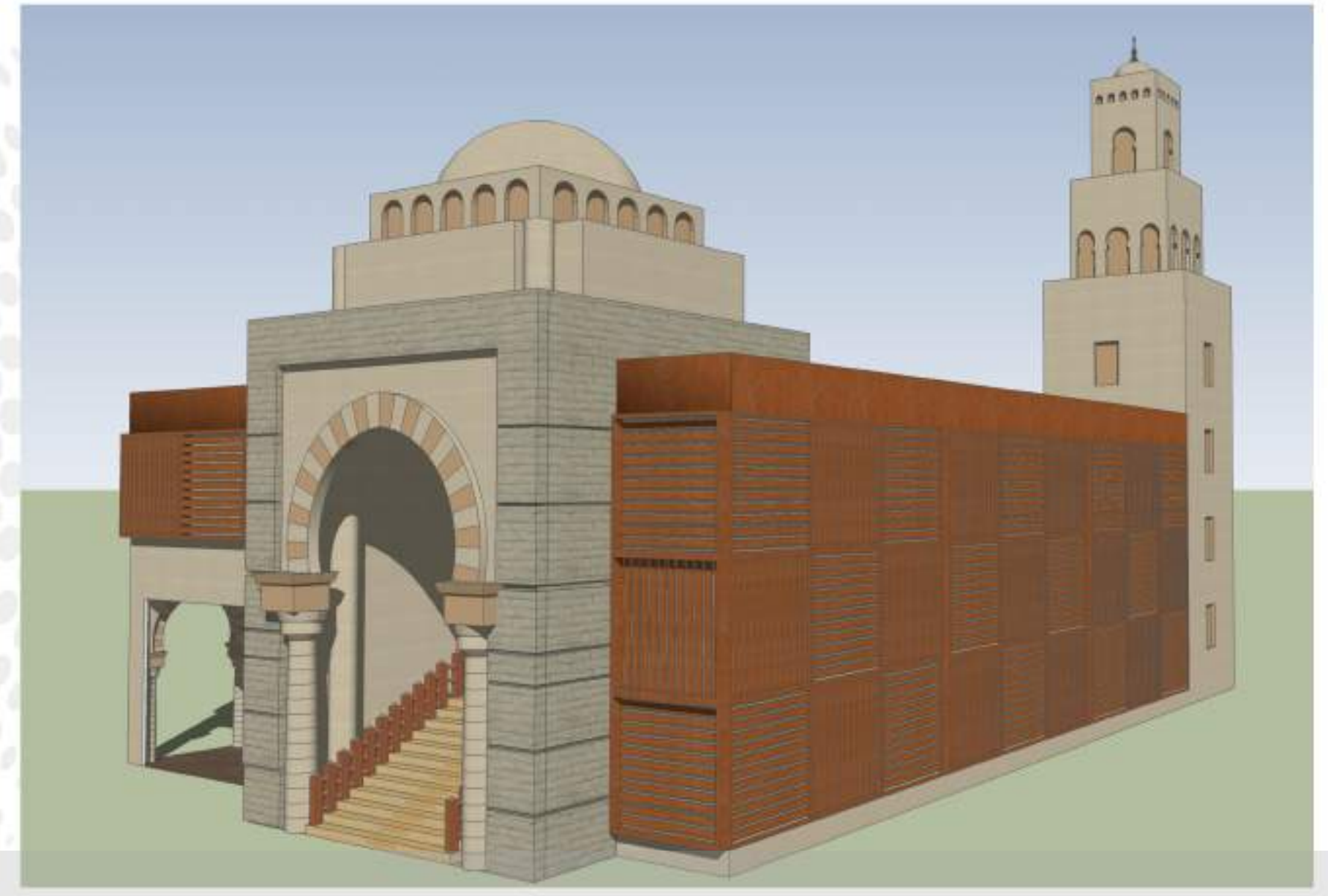




JORRY Park Abha-KSA Site area :11  
acre (46200 m2)



# MOSQUES



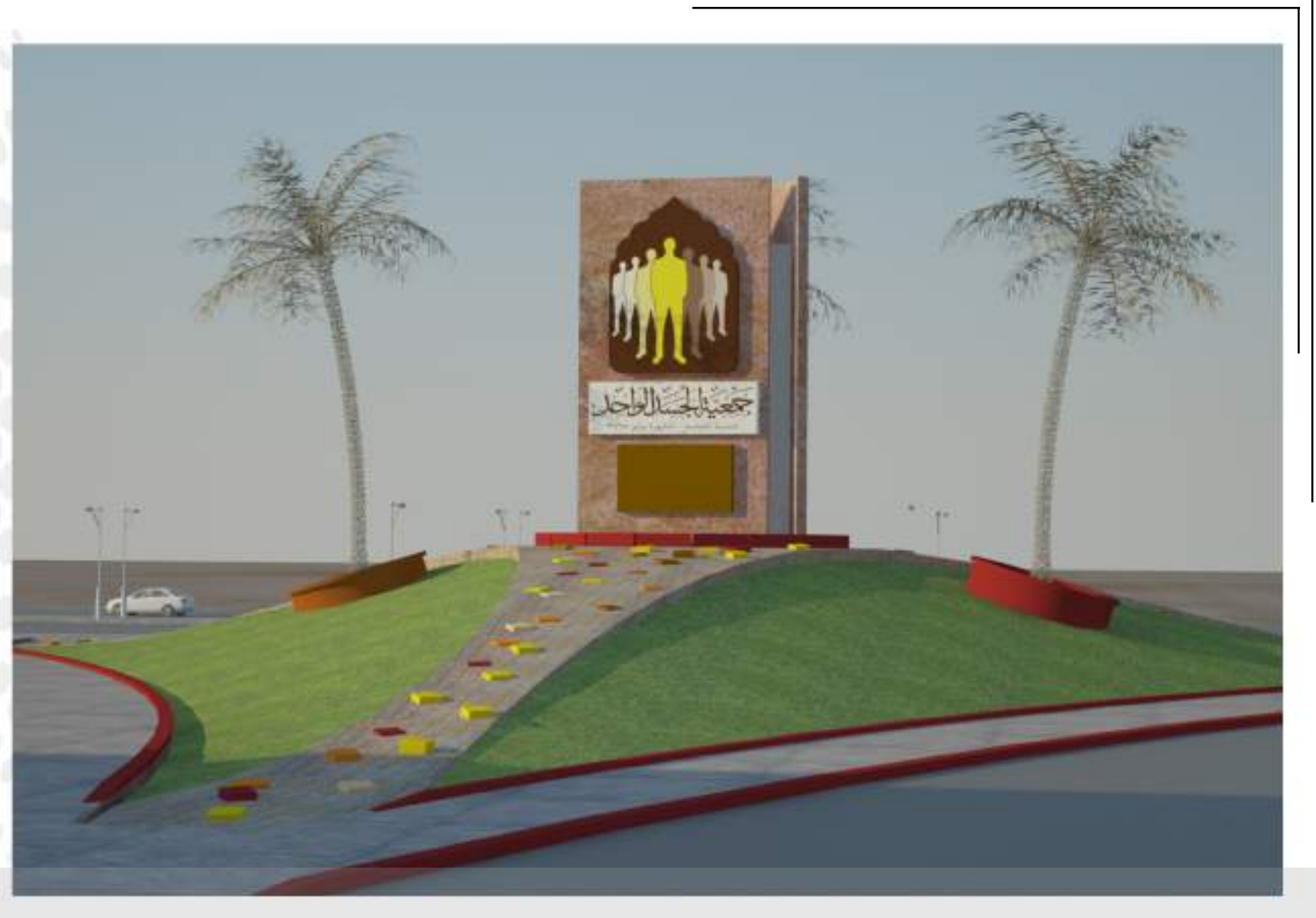
MASJED Banha - Egypt



# **F**ACTORIES & **W**AREHOUSES

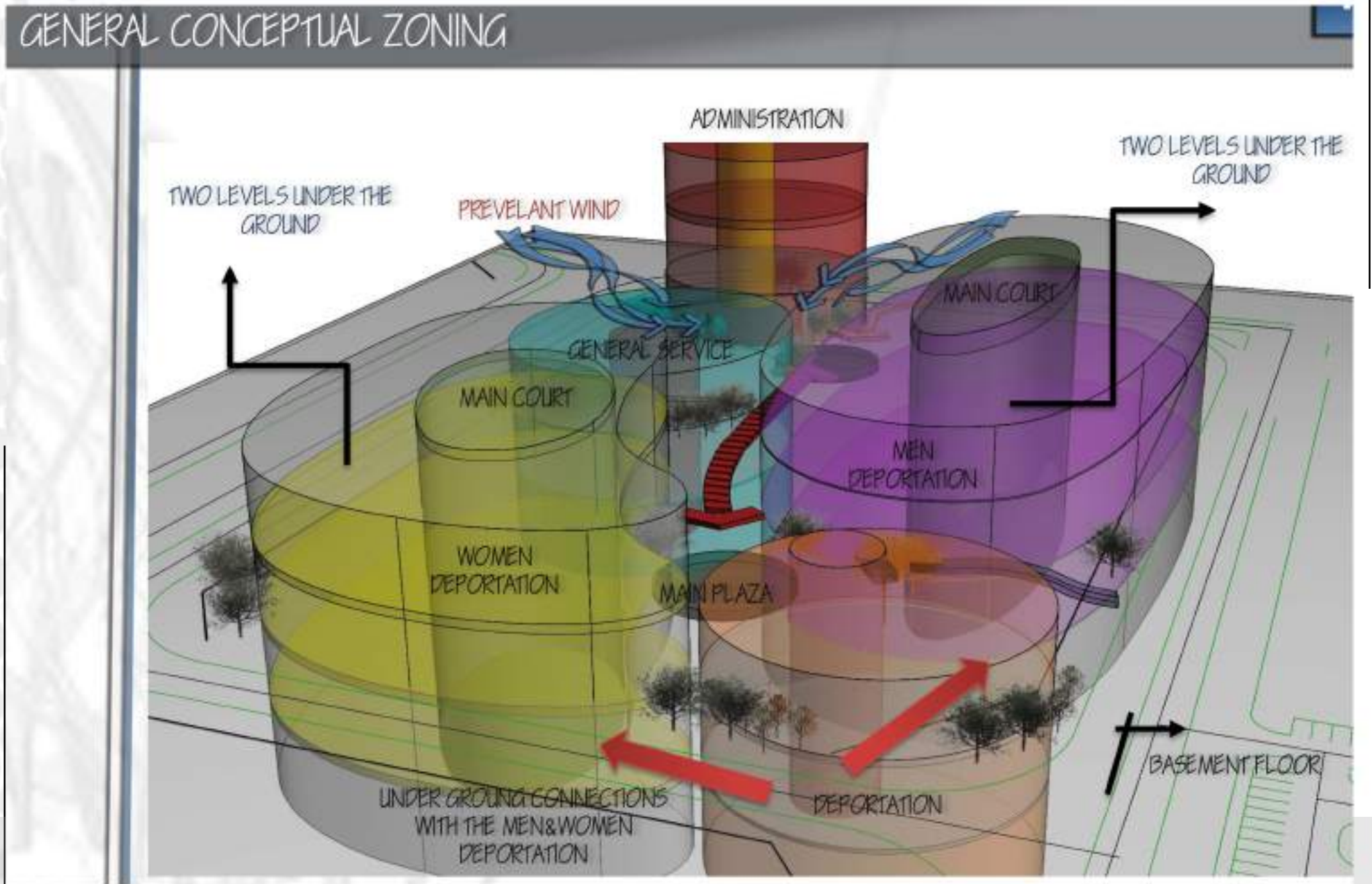
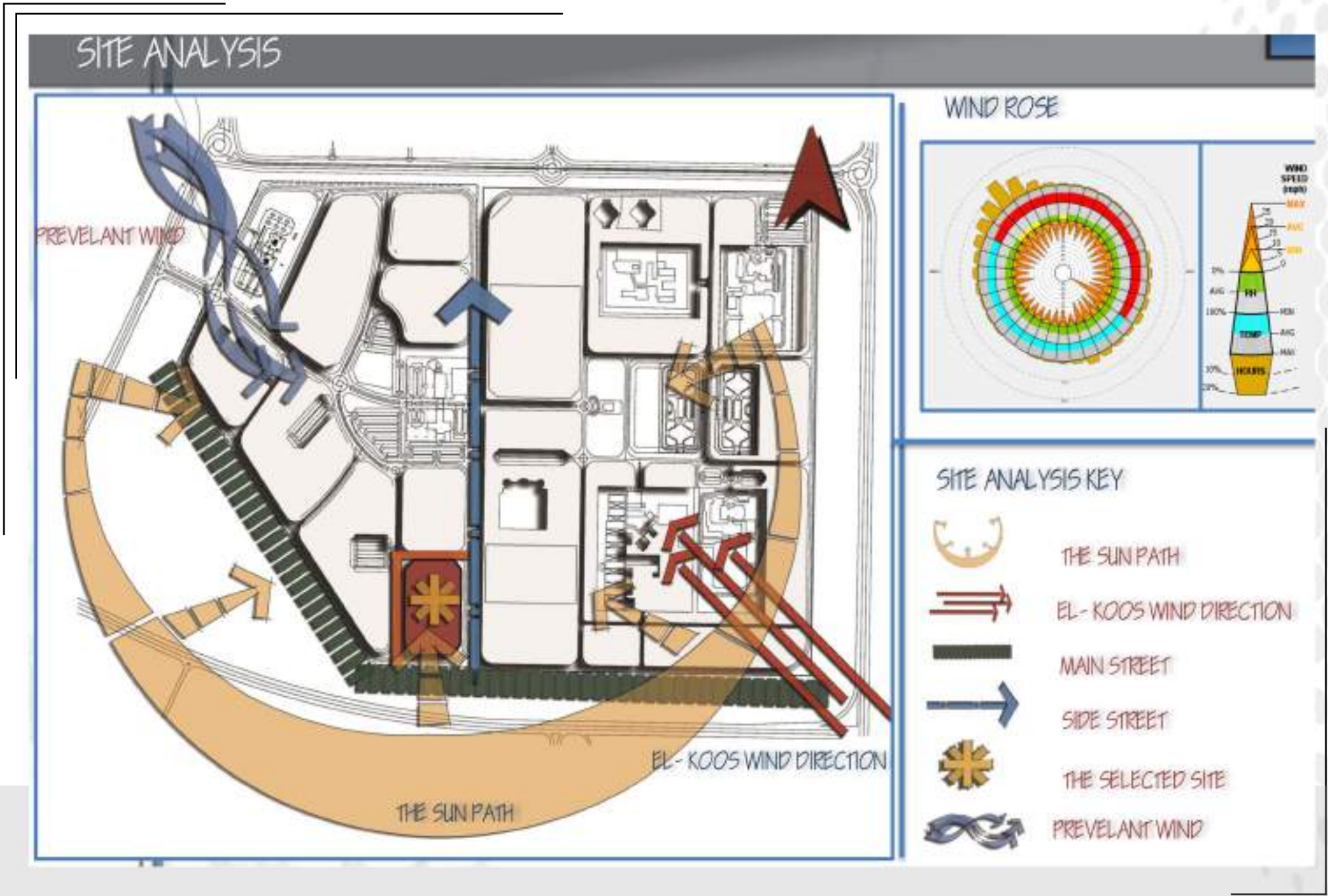






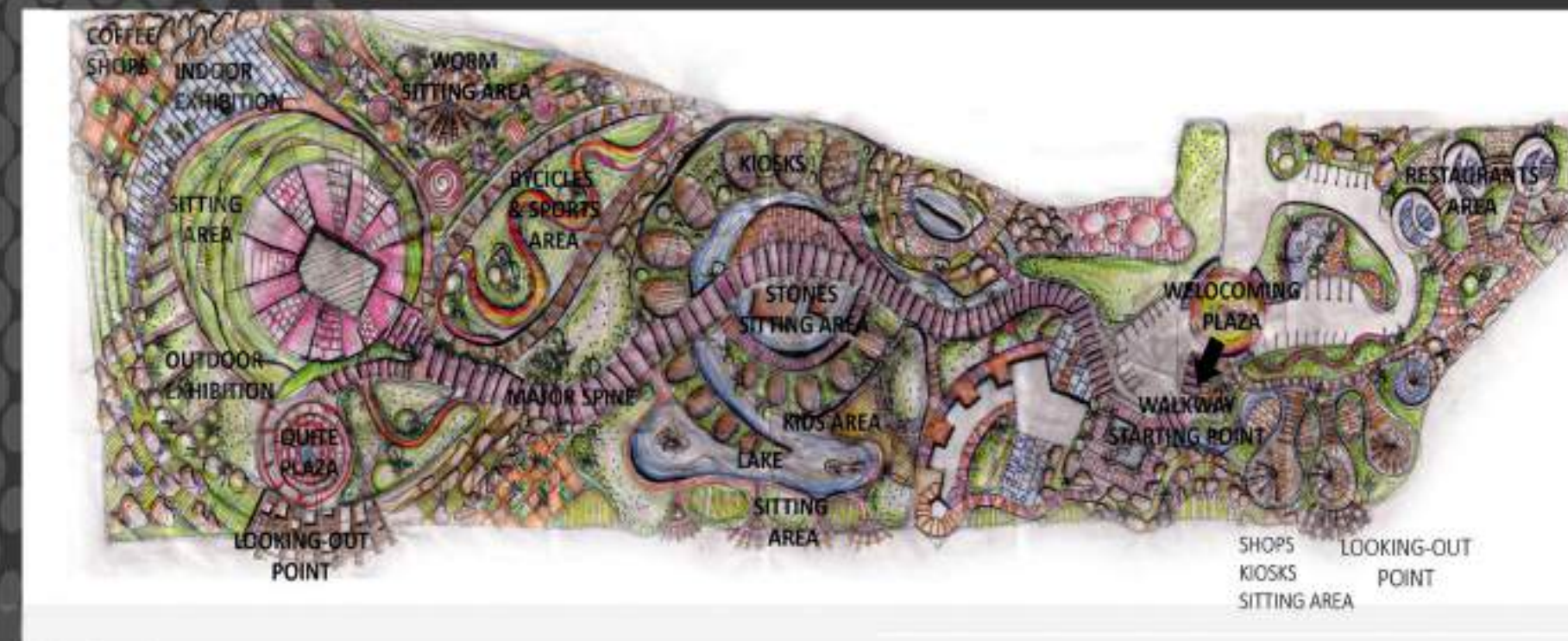
Al-Jasad Square  
6 October - Egypt







# URBAN & LANDSCAPE



PARK JORRY Park Abha-KSA Site area :  
11 acre (46200 m2)





Heliopolis - Cairo  
Egypt  
Site area : 5 Floors / 1500 m2







JORRY Park Abha-KSA  
Site area :11 acre (46200 m2)



Our conceptual design has been approved by AmanetA-seer (Mr.Ibrahem Al-Khalil) -Landscape design (soft scape &hard scape) for park , respecting to: Existing old park/



Abha -KSA  
Site area : 14330 m2



Architectural design to : Restaurants area / open & close exhibition / Kiosks design- Monuments conservation for historical citadel

SHOTS



LANDSCAPE Private villa  
Sharm Al-Shiekh-Egypt





Landscape design and  
design for private villas.

